

Installation Instruction Witex laminate flooring

Laminatboden Leimlose Express Verlegung

Laminate flooring Glueless Express Laying

An-Messung 340 | 10-01-01

**Schnelle und einfache
Verlegung**

Simple and quick
to install

CELQ

EPLF

Member of
the European
Production of
Laminata
Flooring

LocTec

Produziert von der Laminatwerkstatt des
LINDLUM Group

Sound Protect

optional

Fußbodenbeheizung
Setzt die für lock-verbinder
unter floor heating

Use in places with higher
Factors
Stat approved, verbot

E1
ECHO

E1-geprüftes
Holzwerkstoff
E1-geprüft
recycle material

Wasserdicht
Can be used in wet areas

General Information

Please adhere to the following laying instructions! Detailed laying and cleaning instructions available at info@witex.com. The conditions of ATV DIN 18365 and references at www.epfl.de shall apply.

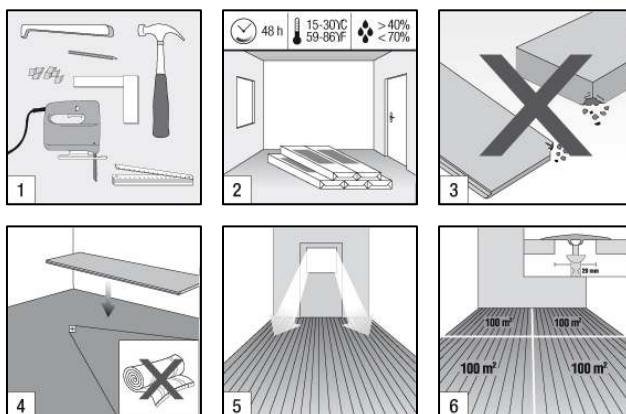
[3] Check the panels before and during laying. Used material is excluded from claims.

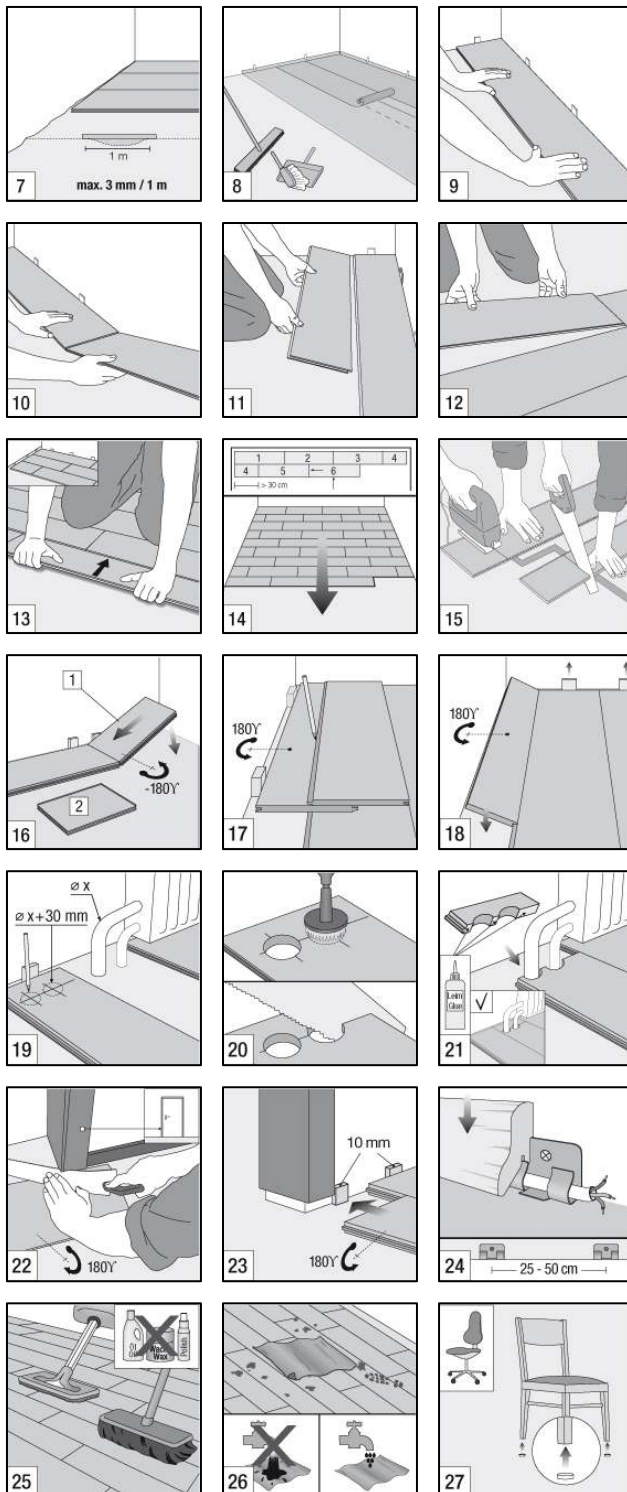
Transport - Storage – Air conditioning

[2] The film is not a substitute for a dry storage location and does not provide permanent protection against moisture.

Subfloor

[4] Old floor coverings must be removed. The subfloor must comply with the recognised valid professional regulations and must be dry, level, clean and suitable for bearing loads according to state-of-the-art technology. Underfloor heating: only hot water underfloor heating systems with a maximum surface temperature of 26°C. Install PE film (vapour barrier) with a minimum thickness of 0.2 mm to overlap and form a tray on all mineral subfloors (not on wooden subfloors). Then use of original Witex insulating bases. No other base is necessary when using Witex floor coverings with a laminated insulating base. Insulating bases have a decisive effect on home comfort.





Laying

[5-18] Laying of the laminate flooring elements usually parallel to the main source of light. If several rooms / areas are fitted with laminate flooring, separate them in the door areas or transition areas (suitable profiles). Keep a marginal clearance of at least 10 mm to all fixed objects and walls. Lay the panels with the tongue to the wall. Use laying aids. For pipe ducts, please observe fig. [19-21].

[22/23] If necessary, shorten existing wooden door frames.

Finishing work:

Removal of all spacing blocks.

[24] Never fix skirting boards to the floor. Close expansion joints / pipe ducts etc with profiles / covering rosettes or seal off with PE round cord or joint sealing compound (Witex accessories).

Instructions for care:

[25-27] Hoover or sweep. Wipe with a well wrung-out cloth. No not use any abrasive (scratching / scraping) micro fibres or cleaning agents which leave a film on the flooring. Recommended room climate 50 - 65 % measured at 20°C. Provide entry zones or foot mats.

[27] Attach felt pads (Witex Accessories) underneath chair and furniture legs etc. Equip castor-mounted furniture with castors of type W (DIN 68168). Surface temperature with underfloor heating max. 26°C. Danger due to heat build-up!

INFO

www.witex.com

www.EPLF.com
(European Producers Laminate Flooring)

General instructions for Witex flooring panels

Inspect panels before commencing work. Used material is not covered by claims for replacement.

Underlay

Depending on the type of existing subfloor, underlays can have a decisive effect on comfort. Certain Witex floor coverings have a footfall noise insulation layer integrated with the product. For all other collections there is a choice of original Witex underlays (Profi-Ripp 2.5mm, combi-mat 3mm, Sound-Protect 2mm and 2.8mm, and Witex Combi Foil 2mm).

Transport – storage – conditioning

Witex floor coverings are supplied film-wrapped with additional cardboard edge protectors. This protects packages from contamination and the effects of moisture during transport. However, the film wrapper provides no long-term protection against moisture and is no substitute for a dry storage area.

Please take note of the following

- Do not transport or store Witex materials on their ends or edges. Always store them on a flat, even surface.
- Before fitting, condition the Witex floor coverings for 48 hours in sealed packaging in the room where they are to be laid.
- Fitting conditions:
 - Subfloor temperature > 15 °C
 - Room temperature > 18 °C
 - Humidity < 60 %
- Only open enough packages for your immediate requirements.
- If you do not aim to use the panels from an open package straight away, reseal it immediately with sticky tape.

Subfloor requirements

The subfloor must be level, clean, dry and adequately load-bearing in conformance with acknowledged trade practice and latest technical standards. The subfloor must be free of particulate contamination e.g. sand. We recommend that the subfloor be first swept and then vacuum cleaned. Adhesive residues must be removed or neutralised. To prevent creaking, old floorboards must be checked for soundness and screwed down or levelled out as necessary.

Witex floor coverings can be installed as a floating floor over all types of screed (including heated screeds), existing timber, floorboards or chipboard surfaces, PVC, plastic or lino floors and stone, ceramic or marble. Existing carpets and felt coverings must be removed.

Residual moisture content in the cement screed (guideline minimum 28 days from laying) must be <2.0%; for anhydrite screed the figure should be <0.5%. For self-levelling screeds, observe the manufacturer's data on readiness for parquet fitting. For solid or other timber floor constructions, take moisture content equilibrium readings at maximum atmospheric relative humidity of 50%. In addition, the heating cycle procedure for new underfloor heating installations must be successfully completed before commencing laying.

On mineral-based subfloors, an additional vapour barrier of minimum 0.2mm PE film must be provided. The vapour or moisture barrier must be laid beneath the underlay. In cases where a room has no air space beneath it, and in vaults and passageways, minimum 1.2mm thick plastic sheet must be used. This is also required in installations above rooms where particularly high humidity is experienced or for installations directly over concrete.

Evenness tolerance detailed in DIN18202, Table 3, Row 4 must be observed (e.g. maximum 3mm tolerance over 1m measured span). Subfloors which do not conform to permitted tolerances must be treated with a suitable levelling or smoothing compound.

The subfloor must be solid throughout and must not give or flex more than the tolerances mentioned above under loads applied in normal use.